



MADISON™ WHIRLPOOL AND BATHING POOL HIGH GLOSS

MADISON™ WHIRLPOOL AND BATHING POOL

015-0015 Madison Whirlpool

- Rectangular unit constructed of durable acrylic
- Perfect size for replacing existing bathtub
- Eight fully adjustable hydro-jets including one at neck position and one rotary lumbar massage jet
- Sloping backrest with sculpted armrests
- Air on/off switch
- Electronic control pad enables use of Whirlpool, Air Massage, or both systems simultaneously (Total Massage models only)
- Safety suction system
- Pre-leveled base
- Textured bottom for slip-resistance
- Apron available (optional)
- Factory installed options available
- Limited Lifetime Warranty

015-0011 Madison Air Massage Tub

- High gloss acrylic
- Bath with Air Massage system

015-0014 Madison Total Massage Whirlpool

- Same as 015-0015 except with Air Massage system and electronic control pad

015-0010 Madison Bathing Pool

- High gloss acrylic

Nominal Dimensions:

60" x 32" x 19"
(1524 x 813 x 483mm)

Compliance Certifications -

Meets or Exceeds the Following Specifications:

- Underwriters Laboratories - Hydromassage Bathtubs UL 1795
- ASME A112.19.7M for Whirlpool Appliances
- ANSI Z124.1 for Plastic Bathtubs

SEE REVERSE FOR PRODUCT DIMENSIONS
AND SPECIFICATIONS



To Be Specified - Required:

- Color:
- Bath Filler: (specify finish)
Recommended: 9088900.295 (check deck width prior to mounting on unit)
- Bath Drain:

To Be Specified - Optional:

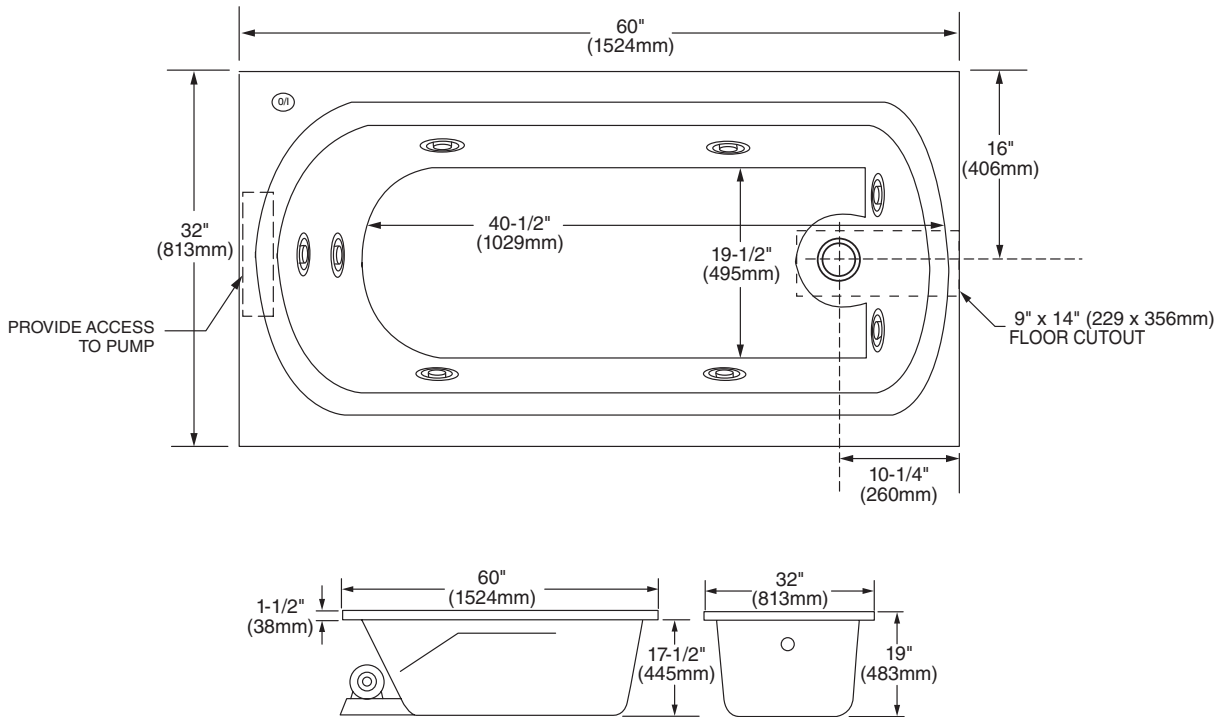
- 415-0015 - 5' Acrylic apron/skirt, colored-matched (specify color)
- 415-0005 - 5' Co-Ex apron/skirt with access panel (available in White only)
- 415-0055 - 5' Acrylic apron/skirt, colored-matched with access panel (specify color)
- 494-0060 - Attachable tile flange
- 494-1000 - In-line heater (field installed)

Factory Installed - Optional:

- 494-8000-00 - Chrome finish hydro-jets (8)
- 494-8000-04 - Polished Brass finish hydro-jets (8)
- 494-8000-25 - Satin Nickel finish hydro-jets (8)
- 494-0001-00 - Chrome finish massage jet
- 494-1005-00 - In-line heater
- 494-8100-00 - Mood light
- 494-8500-00 - Chromotherapy light kit (2 LED lights)
- 494-8505-00 - Remote for chromotherapy light kit

For color/finish availability and other faucet choices, please see www.eljer.com

MODEL 015-0015



GENERAL SPECIFICATIONS FOR MADISON™ WHIRLPOOL	
INSTALLED SIZE	60 x 32 x 18-1/2 In. (1524 x 813 x 469mm)
WEIGHT	98 Lbs. (45 Kg.)
WEIGHT w/WATER	418 Lbs. (190 Kg.)
GAL. TO OVERFLOW	40 Gal. (151 L.)
BATHING WELL AT SUMP	19-1/2 x 40-1/2 In. (495 x 1029mm)
WATER DEPTH TO OVERFLOW	16-1/4 In. (413mm)
FLOOR LOADING (PROJECTED AREA)	31 Lbs./Sq. Ft. (153 Kgs/Sq. m.)
PTS.	14.5
CUBE (FT ³)	26.1

NOTES:

BATH CAN BE INSTALLED EITHER ABOVE OR BELOW FLOOR LINE AS PIER, ISLAND, OR PENINSULA TYPE INSTALLATION. SUPPORT OF BATH BY SUMP BEDDING. SUPPORT AND ENCLOSING MATERIAL BY OTHERS.

■ REFER TO INSTALLATION INSTRUCTIONS SUPPLIED WITH WHIRLPOOL FOR ADDITIONAL INFORMATION.

OPTIONAL 3 WALL TILING BEAD KIT AND APRON AVAILABLE AND MUST BE ORDERED SEPARATELY.

FITTINGS NOT INCLUDED AND MUST BE ORDERED SEPARATELY.

PROVIDE SUITABLE REINFORCEMENT FOR ALL SUPPORTS.

IMPORTANT: Dimensions of fixtures are nominal and may vary within the range of tolerances established by ANSI Standard Z124.1. These measurements are subject to change or cancellation. No responsibility is assumed for use of superseded or voided pages.