



DIPLOMAT™ RIGHT HEIGHT™ ELONGATED COMPLETE TOILET with INSULATED TANK

VITREOUS CHINA

DIPLOMAT™ RIGHT HEIGHT™ ELONGATED COMPLETE TOILET with INSULATED TANK

091-3276-XX1BW

- Vitreous china
- Low-consumption (6.0 Lpf/1.6 gpf)
- 16-1/2" rim height for accessible application
- Elongated siphon action jetted bowl
- Fully-glazed 2-1/8" trapway with 2" ball pass
- Generous 9" x 8" water surface area
- Oversized 3" flush valve with chemical resistant flapper
- Insulated liner in tank to resist condensation on outside surface
- Color-matched trip lever
- Speed Connect® tank-to-bowl coupling system
- Sanitary dam on bowl with four point tank stabilization
- Includes color-matched plastic toilet seat and cover
- Wax ring gasket with closet bolts
- 2 color-matched bolt caps
- 100% factory flush tested
- 5 year total toilet warranty



Nominal Dimensions:

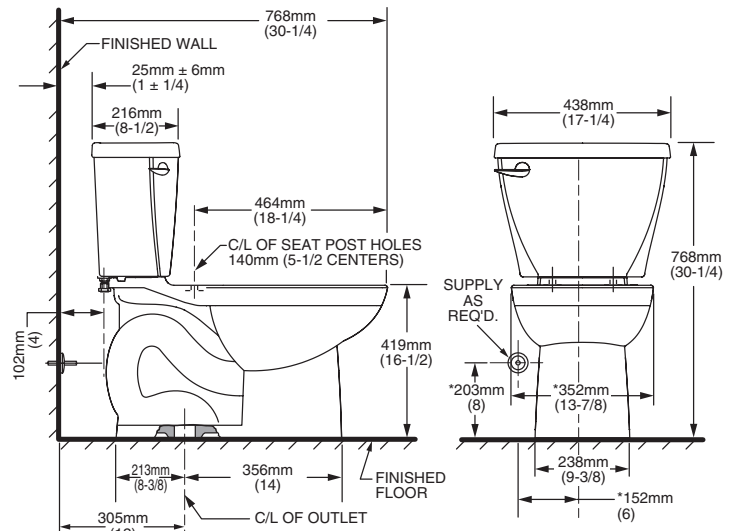
768 x 438 x 768mm
(30-1/4" x 17-1/4" x 30-1/4")

Fixture only, seat and supply by others

Compliance Certifications -

Meets or Exceeds the Following Specifications:

- ASME A112.19.2-200 / CSA B45.1-08
- Los Angeles Department of Water and Power Supplementary Purchase Specification for Non-Adjustability



To Be Specified:

- Color: White
- Supply with stop:

NOTES:

THIS TOILET IS DESIGNED TO ROUGH-IN AT A MINIMUM DIMENSION OF 305MM (12") FROM FINISHED WALL TO C/L OF OUTLET. SUPPLY NOT INCLUDED WITH FIXTURE AND MUST BE ORDERED SEPARATELY.
* DIMENSION SHOWN FOR LOCATION OF SUPPLY IS SUGGESTED.

IMPORTANT: Dimensions of fixtures are nominal and may vary within the range of tolerances established by ANSI Standard A112.19.2. These measurements are subject to change or cancellation. No responsibility is assumed for use of superseded or voided page



MEETS THE AMERICANS WITH DISABILITIES ACT GUIDELINES AND ANSI A117.1 REQUIREMENTS FOR ACCESSIBLE AND USABLE BUILDING FACILITIES-CHECK LOCAL CODES.